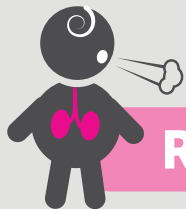


SEPSIS

THE LIFE-THREATENING
RESPONSE TO INFECTION

KNOW THE SIGNS!

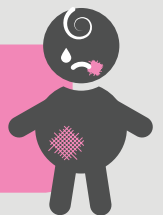


RAPID BREATHING

CONVULSIONS OR FITS

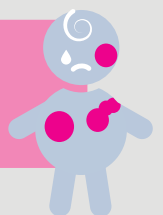


**A RASH THAT DOESN'T FADE
WHEN YOU PRESS IT**



FEVER OR VERY LOW TEMPERATURE

**DISCOLOURED OR MOTTLED SKIN,
VERY PALE OR BLUISH**



NOT PASSING URINE FOR SEVERAL HOURS

HARD TO WAKE, LETHARGIC OR FLOPPY



DON'T DELAY – SEEK URGENT MEDICAL CARE!