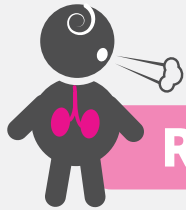


# SEPSIS

THE LIFE-THREATENING  
RESPONSE TO INFECTION

**KNOW THE SIGNS!**

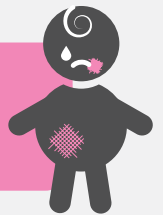


**RAPID BREATHING**

**CONVULSIONS OR FITS**

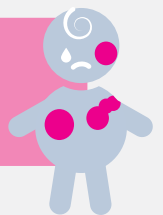


**A RASH THAT DOESN'T FADE  
WHEN YOU PRESS IT**



**FEVER OR VERY LOW TEMPERATURE**

**DISCOLOURED OR MOTTLED SKIN,  
VERY PALE OR BLUISH**



**NOT PASSING URINE FOR SEVERAL HOURS**

**HARD TO WAKE, LETHARGIC OR FLOPPY**



**SEEK URGENT MEDICAL CARE! ASK COULD IT BE SEPSIS?**