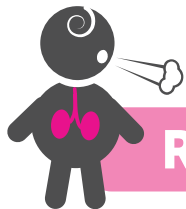


SEPSIS

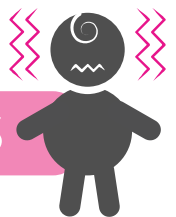
THE LIFE-THREATENING
RESPONSE TO INFECTION

KNOW THE SIGNS!

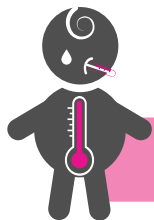
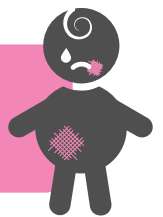


RAPID BREATHING

CONVULSIONS OR FITS

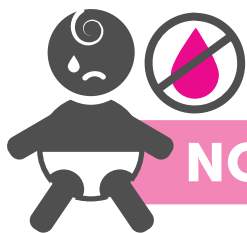
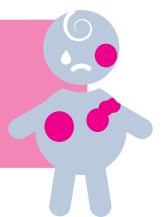


A RASH THAT DOESN'T FADE
WHEN YOU PRESS IT



FEVER OR VERY LOW TEMPERATURE

DISCOLOURED OR MOTTLED SKIN,
VERY PALE OR BLUISH



NOT PASSING URINE FOR SEVERAL HOURS

HARD TO WAKE, LETHARGIC OR FLOPPY



SEEK URGENT MEDICAL CARE! ASK COULD IT BE SEPSIS?