

Information for parents, carers and families of children who have died from sepsis

What is sepsis?

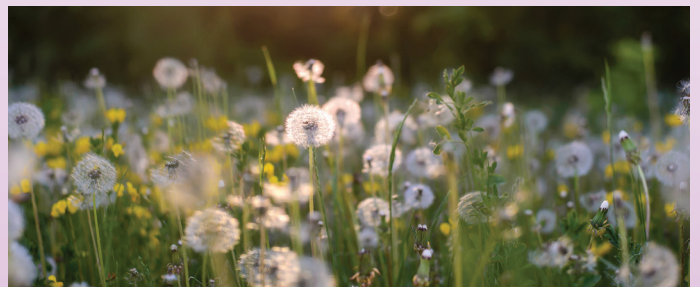
Sepsis happens when the body has an extreme response to an infection that starts to damage its own tissues and organs. This damage can be so severe that it can lead to death. Sepsis, and death from sepsis, can happen very quickly.

The death of your child is devastating. We acknowledge that the grief you are experiencing is unlike anything you would have experienced before. Understanding what happened to your child, and knowing who can help you is important.

Understanding what happened to your child

Your child's healthcare team will talk with you about your child's sepsis diagnosis and the events that led to their death. It is common that you may find it difficult to understand or remember this information. This is because of the trauma and grief you are experiencing. You may like to have a support person with you, such as a friend or Social Worker, to help you take down notes or ask questions.

You can also arrange to speak with your child's healthcare team at another time in the future to discuss the care they received, and what is known about why they died.



Questions you could ask your child's healthcare team

- How did my child become so unwell with sepsis?
- Can I talk to a doctor about what happened at another time in the future?
- Who is my main person of contact in the hospital if I have more questions?
- Where will my child be cared for after I leave the hospital?
- How do I talk to my other children about the death of their sibling?
- Who can support us after we leave hospital?

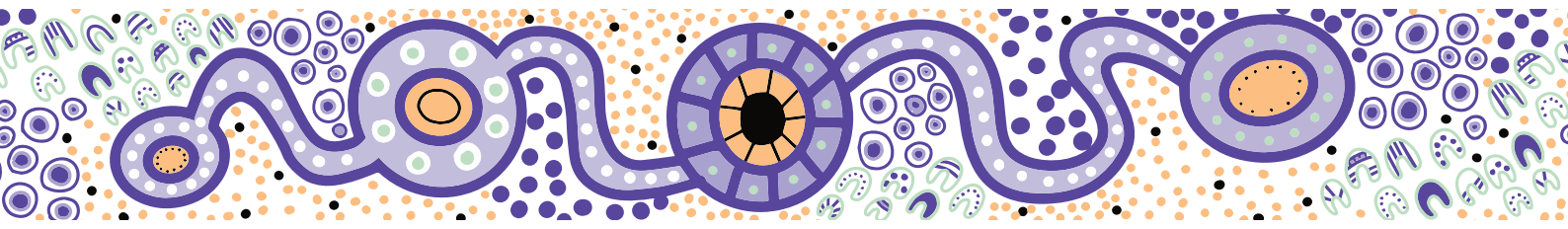


SEPSIS

www.childrens.health.qld.gov.au/health-a-to-z/sepsis



**Queensland
Government**



Support for you and your family

The **Queensland Paediatric Sepsis Program** offers support and information for parents and carers whose child has died from sepsis.

You can use this QR code to register for the Family Support Program. There is no time limit for when you can register, we invite you to do this whenever you feel able to. One of our experienced Social Workers will then contact you.



The **Children's Health Queensland Bereavement Service** also provides support to all families whose child has died in Queensland. To learn more about their support you can phone them on **1800 080 316** or email them at chq_bereavement@health.qld.gov.au

Cultural support

Let your healthcare team know if you need:



A translator or interpreter.



An Aboriginal and Torres Strait Islander Liaison Officer.



Additional grief and loss support:

- Beyond Blue 1300 224 636
- Red Nose 1300 308 307
- 13YARN 13 92 76 - for Aboriginal and Torres Strait Islander people